



1275 Lake Heathrow Lane
 Heathrow, FL 32746
 407-333-1400
 www.HeathrowRealty.com



Heathrow Realty Sales Center



Beautiful Wildlife



Heathrow Country Club Kids Camp



Heathrow's 24-hour Manned Gate



2000 single family homes, estate homes, condos, and villas located on 1,900 acre site with an abundance of lakes, lush landscaping, and mature trees.
 Price range from 300's to 3 million+

Location

14 miles north of downtown Orlando & 1/2 mile west of I-4 (Lake Mary/ Heathrow, Exit 98) in Seminole County.

Heathrow Country Club

- ~ Exclusive private country club with banquet hall
- ~ Ron Garl designed 18 hole championship course
- ~ Clubhouse with main dining room outside patio, bar, and lounge
- ~ Men's and women's card room and lounge
- ~ Weekly member dining and social events

Heathrow Racquet Club

- ~ New fitness center with state-of-the art equipment
- ~ Olympic pool, sauna and jacuzzi, and seasonal lifeguard
- ~ 11 lighted tennis courts with tennis pro shop
- ~ Pool side snack bar and juice bar
- ~ Private and group lessons and tennis leagues for all levels

Sawyer Lake Park

- ~ Lighted volleyball & basketball courts
- ~ Playground and shaded pavilions
- ~ Canoe launching area and fishing dock
- ~ Soccer and softball field
- ~ Miles of walking/jogging paths

Colonial Town Park out the north gate of Heathrow is a unique village-like retail development with fine dining and upscale shopping that has become the most exciting retail destination in Seminole County. Colonial Center adjacent to Heathrow is considered one of the premier office parks in Florida. This 370-acre master planned business park includes offices, hotels, commercial development.



Reserve at Heathrow Premier Listing



1038 Henley Downs Place

Offered at \$799,900 - Short Sale

Presented By Michelle O'Callaghan (407) 221-4745
 www.HeathrowRealty.com



Screened Pool & Spa with Stone work



View Of Lake Irish



Extensive Ceiling Work

Property Facts
 Bedrooms/Baths - 5/4.5
 Heated Square Feet - 4068
 Year Built - 2005
 Taxes for 2009 - \$11,650
 Monthly HOA - \$189.00

Room Dimensions
 Living Room - 22 x 13
 Dining Room - 18 x 13
 Kitchen - 22 x 17
 Family Room - 24 x 15
 Master Suite - 24 x 15
 Second Bedroom - 17 x 12
 Third Bedroom - 12 X 12
 Fourth Bedroom - 12 x 12
 Fifth Bedroom - 13 x 13
 Bonus Room - 22 x 15

Features
 ~ Custom built Marklen Home
 ~ Intricate Tray Ceilings
 ~ Crown Molding
 ~ Granite Countertops
 ~ Tile Roof
 ~ Paver driveway
 ~ 3 car side entry garage
 ~ Extensive Millwork
 ~ Hardwood Floors
 ~ Screened Pool and Spa with Stone work
 ~ Builtins in the Family Room, Dining Room, Office, & Bonus Room
 ~ 3 Bedrooms downstairs and 2 bedrooms upstairs with bonus
 ~ Private Office
 ~ Short Sale subject to 3rd party approval



Gourmet Kitchen



Dining Room



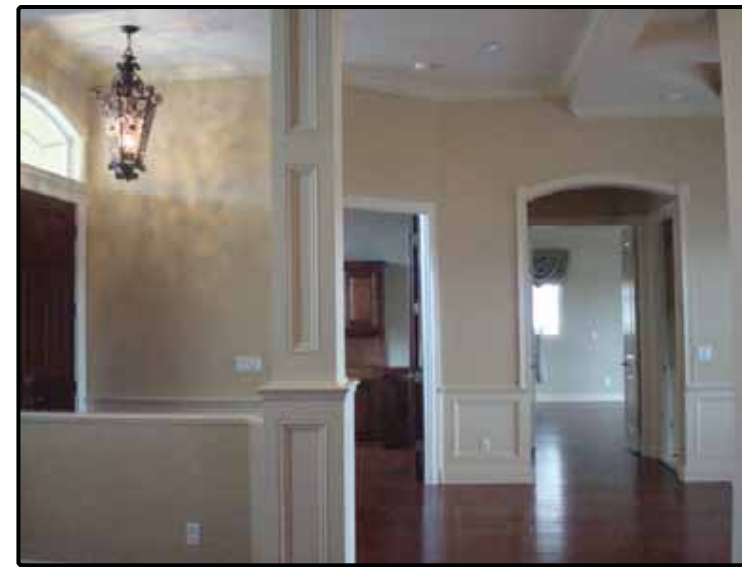
Family Room with Fireplace



Entry



Hardwood Floors & Millwork



Layout